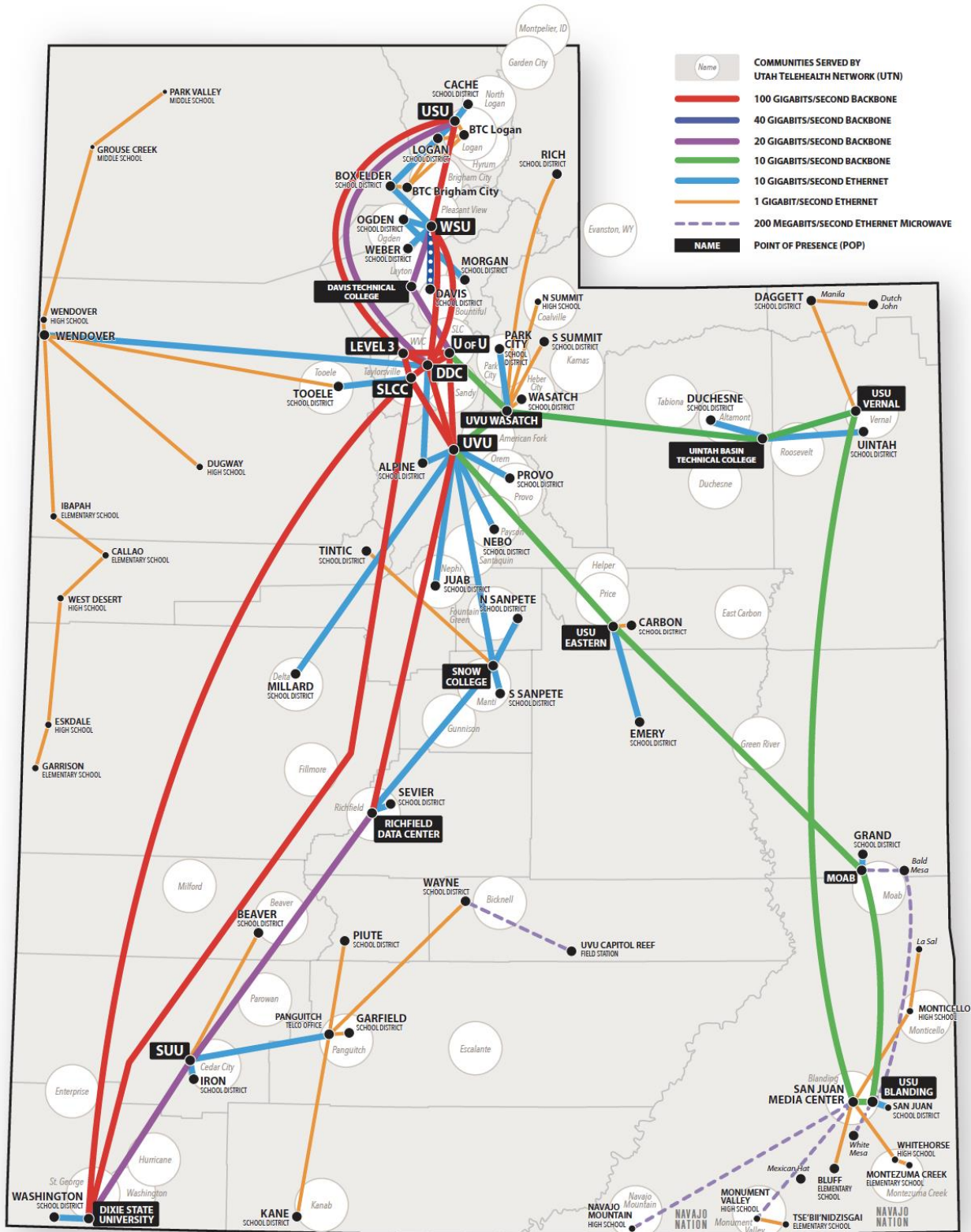


# UETN Infrastructure Map

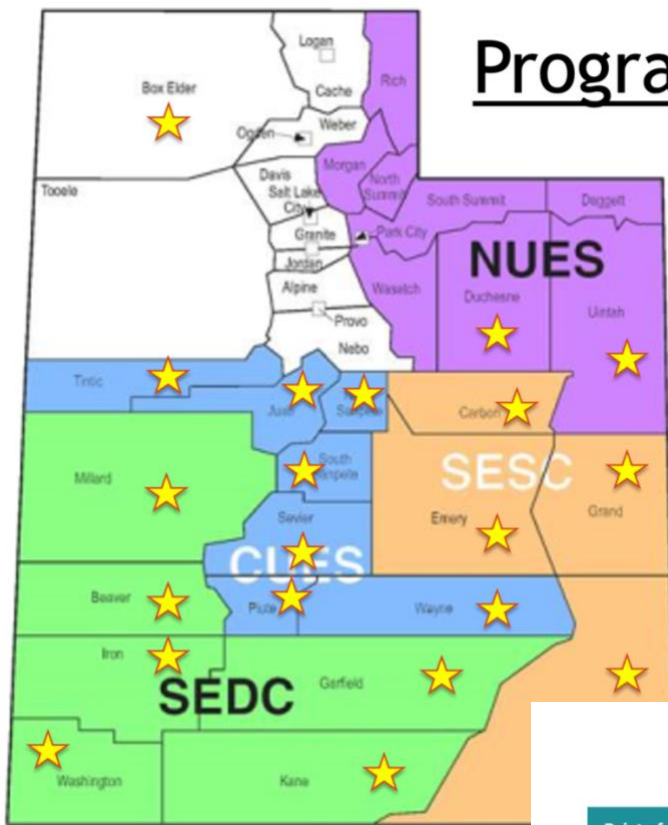
## Connecting 1600+ locations throughout Utah



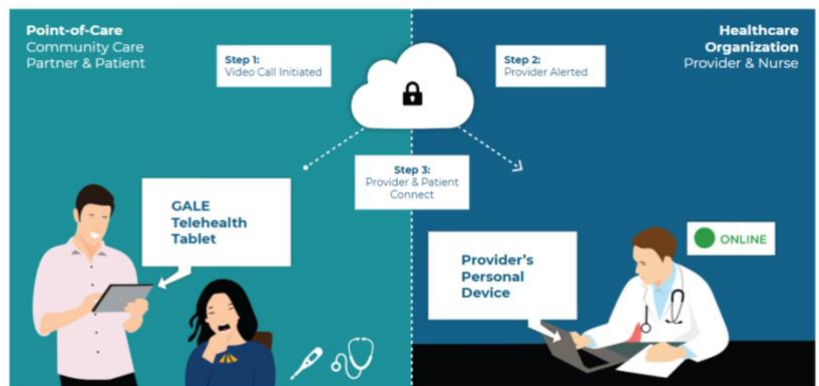
1. Tablet for video visits!
  2. Diagnostic devices:
    - Blood pressure cuff
    - Pulse oximeter
    - Thermometer
    - Stethoscope
    - Otoscope
    - Exam camera
    - Spirometer
- \*\*Glucometer  
 \*\*charging  
 \*\*cleaning  
 \*\*disposable parts



## Program



## Workflow



School health aid  
 School secretary, librarian, etc.

What can the remote provider/nurse do from their end of the camera?

Gale allows both viewing and controlling of peripheral devices.